

Your **District**  
Your **Future**

**Bromsgrove Sustainable  
Community Strategy  
ANNUAL REPORT 2007/08**

## CONTENTS

	<b>PAGE</b>
1. Foreword	3
2. About the District	4
3. Local Strategic Partnership Performance in 2007/2008	7
3.1 Local Area Agreement	7
3.2 Communities that are Safe and Feel Safe	8
3.3 Better Environment for Today and Tomorrow	10
3.4 Economic Success Shared by All	11
3.5 Town Centre Redevelopment	11
3.6 Longbridge Regeneration	13
3.7 Improving Health & Well Being	14
3.8 Meeting the needs of Children & Young People	15
3.9 Stronger Communities	16
3.10 Older People	16
3.11 Housing	17
3.12 Transport	18
3.13 Other Theme Groups	19
3.14 Compact Steering Group	19
3.15 Communications	20
4. What next for the Bromsgrove Partnership?	22
5. Glossary	23
<b>Appendices</b>	
Appendix 1: Structure Aligned to LAA Priorities	24
Appendix 2: Sustainable Community Strategy Key Performance Indicators 2007-2008	25

## 1. Foreword

Welcome to the second annual report of the Bromsgrove Partnership, covering the period April 2007 to March 2008.

At its awayday in February 2007, the Partnership Board members considered local evidence and national priorities on each of the Local Area Agreement (LAA) blocks, and as a result, the following priorities were determined and subsequently approved by the Board on 1<sup>st</sup> March 2007:

- Fear of Crime
- Environment
- Town Centre redevelopment (including transport: railway station redevelopment and associated issues, and community transport)
- Longbridge regeneration
- Health & Well Being
- Children & Young People
- Older People
- Housing

The agreed priorities fit within, and contribute to, the 6 blocks of the LAA. For further information about the LAA, and the Bromsgrove Partnership's contribution to it, please refer to the Sustainable Community Strategy 2007-2010.

The Board feels that it can really add value in delivering less established priorities and the actions to support them, and therefore selected the following 3 priorities as its particular focus between 2007 and 2010:

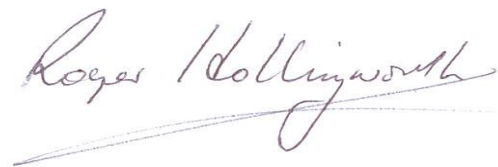
- Bromsgrove town centre redevelopment;
- Longbridge regeneration; and
- Affordable housing.

At the awayday in February 2007, Board members also agreed to revise its performance management and monitoring arrangements, and as a result has developed a robust system underpinned by the Key Performance Indicators and a Community Improvement Plan. You will see in Section 3 of this report the progress made by each of the Theme Groups during the year.

The Partnership continues to grow and develop and we look forward to progressing our community's priorities over the next year, "credit crunch" notwithstanding.

**Mark Weaver**

Mark Weaver, Chairman,  
Bromsgrove Partnership



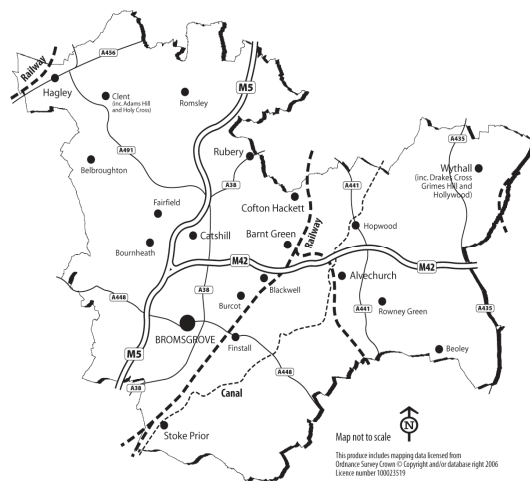
Councillor Roger Hollingworth, Leader  
of Bromsgrove District Council & Vice-  
Chairman of the LSP

## 2. About the District

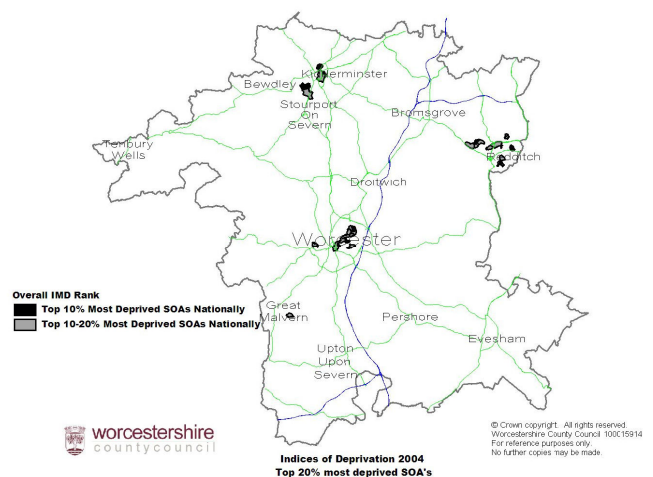
### Geography and Communities

- 2.1 Bromsgrove District is in north Worcestershire, covering a large district area of approximately 83.9 square miles. Whilst only 14 miles from the centre of Birmingham, the Lickey Hills country park provides an important dividing line between the urban west midlands conurbation and the rural landscape of north Worcestershire. Ninety percent of the District is greenbelt, which causes problems for housing policy (see 2.5). Four radial routes pass through the District, each served by railway lines and major roads, including the M5 running north and south, the M42 running east and west, with further links to the M40 and M6.

**Table 1 – Map of Bromsgrove District**



**Table 2 – Map of County Deprivation**



- 2.2 Data suggests that 16,643 people travel into the District for work, with 26,112 (29%) of the population travelling out, a net commute out of 9,469. There are congestion issues along the A38 to the M42 and the railway station does not have capacity to cope with demand. Our main communities are detailed in Table 1. The District has no wards in the top 20% most deprived in England (see Table 2 above).

### Population

- 2.3 The population of the District is approximately 91,600, and has been one of the fastest growing in the county. (2006 figure). This increase is mainly attributable to inward migration as a result of a number of large housing developments, with the District clearly being viewed as an attractive location to live and work in (and commute from). The black and minority ethnic population (BME) is only 3.3%, which is low for the region and nationally. This BME percentage comprises 1% Irish, 0.8% Asian, 0.8% mixed, 0.4% black and 0.3% Chinese. There are 39,000 households in the District. Over 25% of households contain only one older person. An estimated 6,964 households in the District have one or more members in an identified special needs group; this is 19.1% of all households in the District, well above the national average (of these 56.7% have a physical

disability and 37% are frail elderly). The elderly population is predicted to expand as a proportion of the overall District population, with the over 80s population estimated to increase by 123.3% by 2029.

## **Economy**

- 2.4 The economic picture of the District is generally very positive. The mean household income is £36,906, which is the highest in the County (the County average is £32,699). There are three major areas of economic concern within the District: the redevelopment of the Longbridge site and Bromsgrove town centre. In April 2005, parts of Phoenix Venture Holdings (PVH), most significantly MG Rover and PowerTrain entered administration, resulting in the closure of the Longbridge car plant. These parts of the Group employed around 5,850 people in the West Midlands and an estimated £410m was spent with firms based in the West Midlands as part of the supply chain. Whilst employment levels naturally increased with the closure, the District's unemployment levels have returned to very low levels (1.6% in February 2008). The Town Centre needs a major overhaul to encourage local shopping and compete with neighbouring shopping centres. Bromsgrove station is the third area of concern. The current station facilities are not considered fit for purpose and a feasibility study is currently being carried out on the possible redesign of the station so that it can take bigger trains, more passengers and 300 car parking spaces. This would help "future proof" the station against any changes to transport charges that may affect Birmingham city centre. Whilst the economic picture has been positive, the impact of the "credit crunch" is a risk to future regeneration plans in the District, in particular, the town centre, train station, Longbridge and affordable housing.

## **Housing**

- 2.5 One of the biggest issues facing the District is affordable housing: 83.4% of households are owner occupied, the 11<sup>th</sup> highest figure in England and Wales and house prices have risen faster than the national average with the average house price being £241,000, and the cheapest housing being just under £100,000. (This figure will come down as a result of the "credit crunch"). The Council is currently operating a planning moratorium with only affordable housing developments being built. The Housing Strategy has a target of 80 units of affordable housing a year for the next five years. The Council and Bromsgrove District Housing Trust will tackle this issue by ensuring the new developments like the Longbridge site, the town centre and any future housing allocation the District has to take as a result of regional housing policy has an appropriate mix of housing, for example, outright ownership, shared ownership schemes, low cost home ownership and rented accommodation.

Whilst ensuring we provide enough affordable housing, we will also need to take increasing account of the expansion of our older population. Meeting the needs of the rising 85+ population will require a good supply of sheltered, care at hand and extra care housing.

The need to keep our youngsters in our communities and our older people cared for within our communities applies not just to planned big developments (like Longbridge), but also our existing urban and rural communities.

We will also ensure an adequate supply of good quality temporary

accommodation to ensure there is a safety net for those people made homeless through difficult circumstances.

### **Education, Deprivation and Health**

- 2.6 The percentage of the population qualified to NVQ Level 4 is significantly higher than average. 69.7% of students at local authority schools and colleges gained 5 GCSEs with A\* - C results in the District in 2007. (61.6% achieved five or more GCSEs at A\*-C within Worcestershire). The District ranks 299<sup>th</sup> out of 354 councils on the national Index of Multiple Deprivation 2007 (where one is the most deprived), making the District one of the least deprived nationally. Sidemoor is the most deprived area of the District. Only 4,050 households are in receipt of housing or council tax benefits in the District, one of the lowest figures in Worcestershire. As a result, identifying the vulnerable within our communities is more difficult than a district with geographic areas of deprivation.
- 2.7 Generally, the District's population is healthier than the regional average. We are fortunate that the District has high life expectancy rates (78.6 years for males and 81.3 years for females) and the majority of people are healthy; however, for those in need of care, the Health Service will continue to provide for them. The Bromsgrove Partnership will focus on a preventative agenda, in particular, reducing smoking and increasing physical exercise and mental activities for our older population, so that people stay healthy for longer.

### **Crime and Fear of Crime**

- 2.8 There has been a 37% reduction in headline comparator crime in the District since 2003/2004; however, our customers' top priority is reducing the fear of crime. This, together with the Partners and Communities Together (PACT) community meetings, has had a very positive impact on fear of crime in the District: 97% of residents feel safe during daytime and 70% after dark. Low-level crimes like: anti-social behaviour, litter, rubbish, "young people hanging around", vandalism and criminal damage remain an issue.

### **Environment and Climate Change**

- 2.9 We want to ensure the Council and its partners take account of the serious issues we face on climate change. Each organisation will need to ensure it is doing its part through cutting energy consumption and increasing recycling. 90% of the District is green belt and we have some beautiful country side in the District; however, an increasing number of species are under threat, so the County and District Council who have specific responsibilities in this regard, need to work together to protect local habitats and maintain biodiversity.

There are targets in the Local Area Agreement 2008-2011 which will be difficult to achieve; NI186 is concerned with reduction of CO<sub>2</sub> emissions and NI 187, which is about tackling fuel poverty – people receiving income based benefits living in homes with a low energy rating. The revised Sustainable Community Strategy 2008-2011 will start to address these issues.

Bromsgrove District Council is also in the special position of protecting the green belt south of Birmingham and stopping the urban sprawl. The rural areas will need to be protected from development and traditional country life maintained. The LSP wants the District's villages to have been developed in line with their local communities' wishes. The more urban areas on the fringe of the District will also need to be protected from encroachment by Birmingham unless the communities themselves wish to be part of the city region. Balancing those wishes with the need for affordable housing and potential shifts in regional housing policy regarding housing allocation is likely to be a key area of focus for the LSP Board over the next few years.

### **3. LSP Performance in 2007/08**

3.1 The Local Area Agreement (LAA) has 6 elements:

- a) Communities that are safe and feel safe
- b) A better environment for today and tomorrow
- c) Economic success that is shared by all
- d) Improving health and well being
- e) Meeting the needs of children and young people
- f) Stronger communities

As shown in Appendix 1, the Bromsgrove Partnership has structured itself to contribute towards these elements, as well as the things that are important locally. Detailed below are the outcomes for each of the Theme or Project Groups. Attached as Appendix 2 is the Sustainable Community Strategy Key Performance Indicators April 2007 - March 2008. This document details the High Level Action Plans for each Theme Group.

### 3.2 COMMUNITIES THAT ARE SAFE AND FEEL SAFE

LAA priorities:

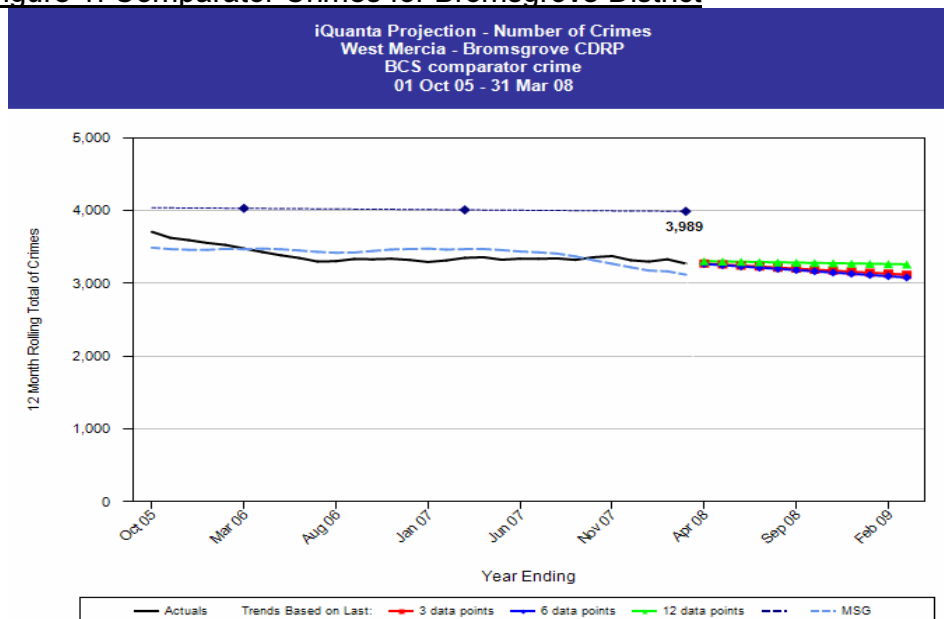
- \* Reduce crime
- \* Reassure the public reducing fear of crime
- \* Reduce the harm caused by illegal drugs
- \* Build respect in communities and reduce anti-social behaviour

Performance against this target has been excellent, with all 10 actions in the Community Improvement Plan being delivered during the year.

Achievements include:

- \* The last three years has seen a 37% reduction in crime levels across District (target was 17.5%).
- \* 11% reduction in burglary dwelling targets.
- \* Vehicle crime reduction equalled 319 offences, equating to 29%.
- \* In 2006/07 there were 6239 reported incidences of anti-social behaviour (ASB) in key areas. During 2007/08, ASB reduced by 2.2%, well ahead of the 2009/10 target.
- \* Violent crimes were 21 crimes under target, and a new Violent Crime Strategy was introduced in March 2008.
- \* The domestic violence arrest rate was 88%.
- \* A Hate Crime reporting process was introduced during the year. To end of March 2008, 15 hate crimes were reported and the hate incidents detection rate stood at 70%.
- \* West Mercia Police presented at the Town Hall meeting, undertook face to face surveys and reviewed its consultation processes; as a result, a more effective way of engaging with communities was developed which can be fed into the Partners & Communities Together (PACT) process. The Council is very unusual in the level of support it provides to the PACT meetings, compared to the rest of the County and nationally.

Figure 1: Comparator Crimes for Bromsgrove District





West Mercia Police has introduced the use of SmartWater, a colourless liquid solution that is simply dabbed onto the uneven surfaces of your valuables. It can be used to code all sorts of items such as jewellery, ornaments, electrical items and even your motor vehicle. Each bottle contains a unique chemical 'code' which is registered to you – conclusively proving ownership. It cannot be easily seen by the naked eye and is almost impossible to remove. The liquid glows under ultraviolet light making it easy for the Police to detect.

Figure 2: Example of SmartWater on Skin



A SmartWater Strategy<sup>TM</sup> has been specially developed to create fear in the mind of the criminal whilst allowing the police to engage with the local community, and in particular with those most vulnerable. New and highly innovative methods are being introduced all the time to react to crime trends and to the needs of Police, Crime & Disorder Reduction Partnerships (CDRPs) and Local Authorities.

SmartWater offers an infrastructure of support to the Police and their partners and comes with a proven track record as a sustainable deterrent of crimes such as burglary, robbery, theft from motor vehicles, hate crimes and domestic violence.

### 3.3 A BETTER ENVIRONMENT FOR TODAY AND TOMORROW

LAA priorities:

- \* To reduce waste and increase recycling
- \* To have cleaner, greener and safer public spaces
- \* To protect and improve Worcestershire's natural environment/biodiversity

Performance on this theme was a little more mixed. We fully delivered 37 (65%) of the 57 actions. Highlights included:

- \* The total amount of residual waste sent to landfill was 22,300 tonnes, 300 tonnes less than the previous year.
- \* 15,864 tonnes was recycled and composted, and 18,729 tonnes were sent for disposal. The dry recycling target was exceeded at 22% (target: 21.5%).
- \* Bromsgrove District Council (BDC) is on target to achieve a 30% improvement. The Government is looking for an 8 – 13% reduction in CO<sub>2</sub> by 2010, with a 2% year on year reduction to achieve a 60% reduction by 2050. Bromsgrove District will be aiming to reduce CO<sub>2</sub> by 66,000 tonnes by 2010.
- \* There was a reduction in levels of graffiti.

Figure 3: How global warming can affect us

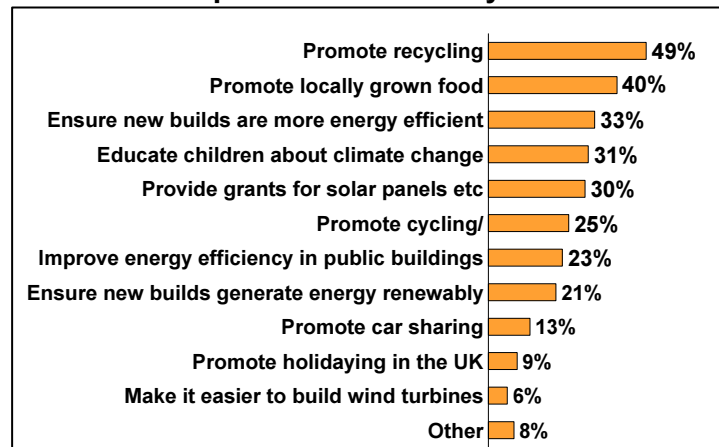


The Quality of Life Survey published in April 2008 asked residents about areas the Council and its partners could concentrate on to help reduce the impact that the area has on climate change. The graph below details what residents said:

Figure 4:

Figure 4: Graph from Quality of Life Survey

**What should organisations concentrate on to reduce the impact the community has on**



**Base: All respondents (677)**

The revision of the SCS for 2008-2011 has a tighter focus around climate change. Recycling remains important, but the target has more emphasis on the new National Indicator NI193, municipal waste land filled. The Council has set up a Climate Change Working Party and also has close links to the Worcestershire Partnership Theme Group, and these issues will remain high on the LSP agenda. The Better Environment Theme Group also has an output of ensuring that all new developments incorporate sustainable drainage systems and development of a renewable energy policy for new development to ensure that new builds are more energy efficient.

The 20 (35%) actions that were not achieved were mainly around the development of a travel plan for Bromsgrove District Council and decisions required by Bromsgrove District Council about how to progress the issue within the Council's structure. It was therefore agreed to progress this action during 2008/09.

**3.4 ECONOMIC SUCCESS THAT IS SHARED BY ALL**

LAA priorities:

- \* To develop a vibrant and sustainable economy
- \* To develop the economic infrastructure
- \* To improve the skills base of the local population
- To ensure access to economic benefits

The Town Centre redevelopment and Longbridge regeneration have been identified as the major priorities for the LSP to concentrate on under the heading of Economic Success.

**3.5 TOWN CENTRE REDEVELOPMENT**

Bromsgrove town centre redevelopment is a long term project for the Council and the Partnership. There were 9 actions identified for the year, of which 7 (78%) were achieved. Achievements during the year include:

- \* Work commenced on the Area Action Plan.
- \* Work commenced on recruiting a developer.
- \* A Project Manager was appointed (to commence work in April 2008) to ensure that the project is focused and does not lose impetus.

A large-scale consultation exercise was undertaken in 2008 on the Issues and Options. The Quality of Life Survey (April 2008) asked respondents to choose three improvements from a list of 14 possible improvements. The results were as follows:

**Figure 5: Town Centre Improvements requested from Quality of Life Survey**

**What improvements would you like to see in Bromsgrove**



**Base: All respondents (655)**

Bromsgrove District Council is very aware of the feedback from residents through various consultation mechanisms, including the Quality of Life survey. The Cabinet is currently considering a package of changes to the car parking regime as part of the 2009-10 budget round. The Council is trying to fast track redevelopment of the town centre with a number of big name stores. Sainsbury's is now coming to the town centre, but the Council has been trying to negotiate with key retailers like Marks & Spencer for the market hall site, which the Council owns. Unfortunately, the credit crunch has had a significant impact on major retailers' plans, and the Council will now go out to tender via the Official Journal of the European Union (OJEU) for the market hall site.

With regard to the other issues in the Quality of Life survey feedback, the Issues & Options paper sets out a range of ideas for tackling improvements desired by our residents.

Figure 6: High Street, Bromsgrove as it currently is



### 3.6 **LONGBRIDGE REGENERATION**

The regeneration of the Longbridge site is another long-term initiative and will take some years to come to fruition; however, of the 17 actions planned for the year, 82% were on target. These include:

- \* 12 acres of the site (30 acres in total) are now occupied and speculative units being built by the landowner.
- \* The Area Action Plan (AAP) was submitted to the Secretary of State in March 2008, which included a proposal for 700+ homes on the East Works site. More than 35% of the homes will be affordable.
- \* Community facilities are indicated in the AAP.

Figure 7: An artist's impression of the regenerated Longbridge site



### 3.7 **IMPROVING HEALTH AND WELL BEING**

LAA priorities:

- \* Reduce health inequalities
- \* To increase life expectancy and reduce morbidity of adults
- \* To improve the quality of life of older people with a limiting long term illness.

Overall performance on health actions is good. The main areas of focus during the year have been around physical activity and reducing adult smoking rates. Of the 33 identified actions for physical activity, 87% were on target; for the 14 actions around reducing smoking rates, 71% were achieved. Some of the highlights were:

- \* The Bromsgrove Extended Community Activity Network (BECAN) has devolved responsibility to deliver the physical activity element of the Health & Well Being Theme Group. BECAN became well established during 2007/08, and mapping/audit of sport and physical activities was undertaken. Bids were submitted to Sport England for various activities – Best Foot Forward, Keep on Moving, Try New Things and Activity Referral. A 5-hour offer for sport was developed and new joint delivery plans were put in place to commence from April 2008. A successful awards evening was held in February.
- \* An angling project was developed with funding obtained from the Worcestershire Voluntary Grants Scheme and additional support from the Children's Fund. There is evidence that young people become involved with angling are less likely to become involved in crime and anti-social behaviour. The scheme is due to go live in June 2008 and referrals will be received from West Mercia Police and other partner organisations such as the Multi-Agency Resource Centre on Charford. Evaluation of each module will be carried out and made available.
- \* A sub-group was convened to progress the smoking agenda, and Bromsgrove District Council supports local businesses for the smoking ban (which came into force on 1<sup>st</sup> July 2007) and revised lower age limit for tobacco sales. The group also worked on promotion of the Heart Smart Award, (to be launched initially at the Charford Children's Centre in July 2008) and promoted Heart Smart Awards for the workplace.
- \* The sub-group promoted National No Smoking Day on 12<sup>th</sup> March 2008, when a fun run and other associated events were held at the Abbey Stadium. Over 100 runners attended, with many having serious chats about quitting and taking away information.
- \* Work is being done with NEW College and high schools to identify 'young champions' to develop support groups for young people who want to quit smoking.
- \* Local smoking data and synthetic estimates have been mapped. Charford and Sidemoor have been identified as hotspots and currently have no accessible quit clinic. An action plan will be developed during 2008/09.

Figure 8: Promotional material available at the No Smoking Day event held on 12<sup>th</sup> March 2008



### **3.8 MEETING THE NEEDS OF CHILDREN AND YOUNG PEOPLE**

LAA priorities:

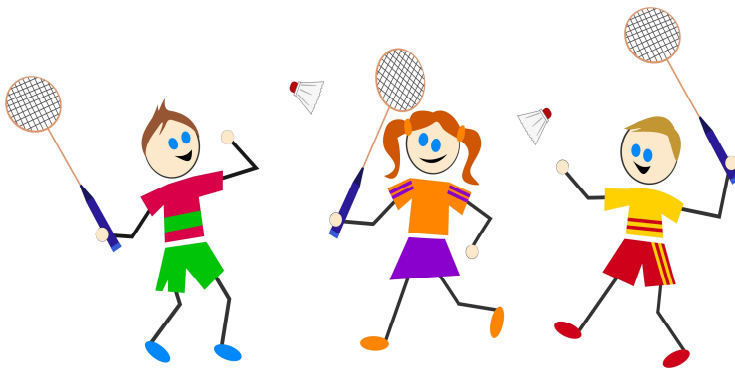
- \* To improve access to and take up of integrated local preventative services
- \* To develop inclusive communities by increasing the level of educational attainments
- \* To increase participation in education and training
- \* To improve the life chances of vulnerable children and young people
- \* To enrich the experiences and development of children and young people through activity and positive contribution

It was agreed during the year that some of the outcomes for the “children enjoying and achieving” priority were inappropriate and unachievable for the LSP, as the outputs were around school performance and attainment and direct involvement was a problem. A key deliverable under the “children contributing and being included” priority details an output around children aged between 8 and 16 volunteering to work with older people gave the same issue. It was therefore agreed by the LSP Board in January 2008 to cease reporting on these key deliverables. Educational attainment and related achievements will be reported at the County LSP level.

There were 23 actions remaining in the Community Improvement Plan for 2007/08, and these were all on target or completely achieved during the year.

Some of the highlights of the year were:

- \* The number of children and young people (aged 5-16) participating in a minimum of 2 hours' per week PE and school sports over the year was 78%, (the target was 75%), a real achievement. The aim is to reach 85% during 2008/09, and this is already ahead of target.
- \* The five-hour offer was planned, and will be introduced from September 2008.
- \* An event was held on 30<sup>th</sup> November 2007 to actively consult with explore the opinions of children and young people aged between 7 and 18. The event identified the focus and topics that the participants cared most about, the challenges and their solutions.



### 3.9 **STRONGER COMMUNITIES**

LAA priorities:

- \* Empower local people to have a greater choice and influence over local decision making and a greater role in public service delivery.
- \* To reduce income deprivation including child and pensioner poverty.
- \* To improve passenger transport, leading to improved accessibility and an increase in passenger numbers.
- \* To increase opportunities for recreation, leisure and culture for all.

Older people and housing have been identified as the major priorities for the LSP to concentrate on under the Stronger Communities block, and a theme group was also started during the year to look at issues around transport.

### 3.10 **OLDER PEOPLE**

We live in an ageing society, and Bromsgrove's 85+ population is forecast to rise by 123% by 2029 and the Board felt it was important to acknowledge this. The theme group was convened in October 2007, and of the 9 actions planned for year, 88% were achieved/on target, including:

- \* Mapping of services available for older people in the County and District.
- \* Linked to other groups and identified opportunities for cross-



working or signposting to theme groups/organisations. (e.g. Compact Steering Group, Health & Well Being Theme Group).

- \* Identified older people to be part of the Older People's Forum. More than 200 people attended the AGM in March 2008.
- \* Identified events/opportunities to engage with older people.



### 3.11 **HOUSING**

As discussed on page 5, there is an imbalanced housing market in the District. It is very difficult for young people and families to move into the District and appropriate housing is also required for our older residents.

The Theme Group had 6 planned actions for year, which were all achieved or were on target. Some of the highlights were:

- \* Completion of a project plan and funding proposals in place for a Housing Demand Study in order to produce a new Housing Strategy. Representations were made about the housing allocations detailed within the Regional Spatial Strategy.
- \* Ongoing work to ensure that local planning policy fully complements the priority for affordable housing.
- \* 80 units of affordable housing completed. (Tenure % of affordable housing for BDC is 11%, compared with the average for the West Midlands and England & Wales of 21%, showing a minimum shortfall of 10%).
- \* Negotiations were progressed and the Area Action Plan submitted to the Secretary of State in March 2008 for more than 35% of the 700 homes planned for the Longbridge site to be affordable housing .

Figure 9: Construction of affordable homes on Austin, Road, Charford



### 3.12 **TRANSPORT**

Of the 7 planned actions, 71% were on target. Some of the actions are long term projects (such as redevelopment of the railway station), where the LSP's influence is limited, so there is an element of having to wait for other organisations. The following were done during the year:

- \* BDC allocated £25,000 and Worcestershire County Council granted £100,000 towards the feasibility study and initial stages of redevelopment. As at the end of March 2008, funding for the entire project was still being clarified; this should be agreed by June 2008, the submission of the planning application following in July 2008. (There is currently still a £6.7 million funding gap as at October 2008).
- \* Detailed research into the feasibility of the introduction of a dial-a-ride scheme for the District commenced, and a project group set up to oversee progress. A Project Initiation Document was submitted to BDC's Corporate Management Team in March 2008 and received approval to progress.
- \* Responses were submitted to the County Council on the consultation of the Integrated Passenger Transport Strategy.

Figure 10: Bromsgrove Train Station



### 3.13 **OTHER THEME GROUPS**

The Bromsgrove Partnership also has local priorities as stated earlier in the report and has groups to support the local Compact and communications. Updates on progress are given below.

### 3.14 **COMPACT STEERING GROUP**

A compact is an agreement of how the statutory and voluntary community sectors (VCS) will work together and build understanding of each others' sectors. BDC signed up to the County Compact in 2006, but it was felt important to do something locally, so a local Compact was developed and Launched in November 2006. A steering group was convened to progress this strand of work.

Of the 11 actions planned for year, only 54% were on target. This has been due to a variety of reasons, including developments within the VCS which has prompted actions to be revised. During the year, the steering group has:

- \* planned an event to promote greater co-operation and understanding between the VCS and senior managers from BDC. The results of the event will allow a comprehensive understanding of the VCS in the context of training and emerging needs.
- \* Adopted the Worcestershire Volunteering Strategy and Code of Practice (also adopted by the LSP Board).
- \* Bromsgrove District Council has granted space in the Hub to support the presence of the VCS on a timetabled basis. The Bromsgrove & Redditch Network (BARN), (the VCS infrastructure agency) is facilitating the process. This will assist with the provision of help, advice and signposting and will further statutory and VCS co-operation.

- \* BARN has prepared information about the work of the VCS in the District for the LCD screens at the Hub and approval was given for VCS organisations to display information on BDC noticeboards across the District.
- \* Planned events for National Volunteers' Week (June).

Figure 11: Celebrating National Volunteers' Week



### 3.15 **COMMUNICATIONS**

It was agreed to have a Communications Theme Group in order to progress partnership communications and issues. All 15 planned actions for the year were achieved, including:

- \* The Glad or Grumpy postcard consultation undertaken during Summer 2007; over 600 responses were received. Feedback was done via a press release and a letter to individual respondents. This was supplemented by the customer panel survey questions on the Sustainable Community Strategy priorities. The campaign was developed by the Group.
- \* Two Local Neighbourhood Partnerships were piloted and evaluated during the year. A way forward and additional funding was agreed.
- \* A launch event for the Sustainable Community Strategy was arranged and held for the press on 14<sup>th</sup> November 2007, on the date that the Strategy was approved by Full Council.

Figure 12: "Glad or Grumpy" postcard

# Glad or Grumpy?



**Bromsgrove** Partnership  
Your **District**, Your **Future**



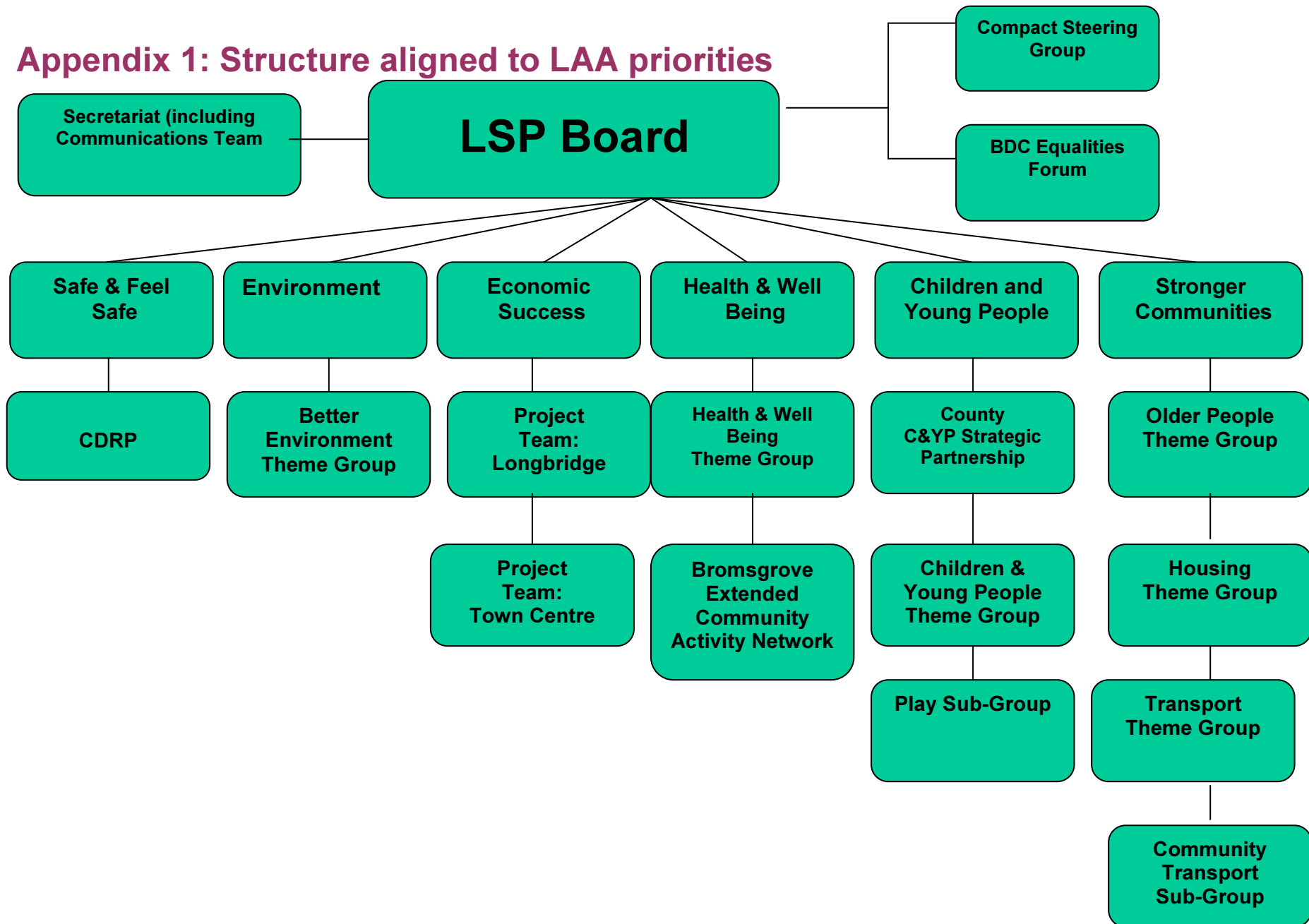
## 4. What next for the Bromsgrove Partnership?

- 4.1 In 2008/09, a new Local Area Agreement will be negotiated by the Worcestershire Partnership. As a result of the new LAA targets, the Bromsgrove Partnership will be reviewing and refreshing the High Level Action Plans and Community Improvement Plan which form the performance management framework to ensure that the Bromsgrove Partnership makes as full a contribution as possible. The Sustainable Community Strategy will also be refreshed to address the new LAA.
- 4.2 Some funding will be available from various sources to assist with the work that is ongoing in the theme groups, which ultimately contribute to the LAA targets. This includes funding from Bromsgrove District Council, Worcestershire Primary Care Trust and Bromsgrove District Housing Trust. Bids will also be made for other sources of funding where appropriate.
- 4.3 A three-year service level agreement will be made to the Bromsgrove & Redditch Network (BARN) to ensure that the voluntary and community sector continues to have a strategic voice in the LSP arena in the District.
- 4.4 The LSP will exercise its leadership and governing role by continuing to identify and articulate the needs and aspirations of local communities. It will use its understanding to ensure information, consultation and involvement opportunities are provided on the right issues, targeted at the right people, and accessible to those the Partnership is trying to reach.

## 5. Glossary

AAP	Area Action Plan
BARN	Bromsgrove & Redditch Network
BDC	Bromsgrove District Council
BECAN	Bromsgrove Extended Community Activity Network
BV	Best Value
HECA	Home Energy Conservation Act
LSP	Local Strategic Partnership
VCS	Voluntary & Community Sector
WCC	Worcestershire County Council

## Appendix 1: Structure aligned to LAA priorities





# SUSTAINABLE COMMUNITY STRATEGY 2007-2010 KEY PERFORMANCE INDICATORS MARCH 2008 UPDATE

This document is to be used for progress reporting and assessment of status using the Local Area Agreement designations based upon examination of current performance/activity, potential for improvement and risk by the Lead Partner using the following criteria:

<b>Above Target</b>	Indicates good performance, ahead of the expected position – <b>GREEN</b>
<b>On Target</b>	Indicates performance at the expected position – <b>GREEN</b>
<b>Borderline</b>	Indicates performance which is marginally below the expected position – <b>AMBER</b>
<b>Below Target</b>	Indicates poor performance, significantly below the expected position. The Partnership should consider remedial action that may be required – <b>RED</b>
<b>No data provided</b>	Indicates there is no updated performance data since the submission of the last report - <b>BLUE</b>
<b>No Status</b>	Indicates that the outcome/indicator is in a subsequent year or the predicted start date has not arrived - <b>CLEAR</b>

**COMMUNITIES THAT ARE SAFE AND FEEL SAFE HIGH LEVEL ACTION PLAN**  
**THEME CHAIR: TONY LOVE**

**PRIORITY: TO REDUCE FEAR OF CRIME**

Key Deliverable (Outcomes)	Baseline	Outputs	How do we know we are getting there?	Completion Date	Resource	Lead Partner	LAA Link	Progress to Date March 2008	Status
People's perception of crime matches reality	52% of people surveyed expressed a fear of crime*  (*2006 fear of crime survey)	1% reduction in surveyed fear of crime each year*  (* NB – new indicator being developed in LAA refresh)	Survey result, PACT priorities eg local policing and local reassurance, face to face surveys, campaign via GNN in place publicised with CDRPs	End April 2008 (repeat annually)	CDRP – All partners	Police	A1c	Force-wide survey concluded and results added to the SCS and used at the press launch. In addition, a young people's school based survey has been undertaken and analysis of data is under way. A CDRP action plan has been agreed to address the areas of concern identified in the content of the survey.	
Reduction in anti-social behaviour in key areas*	6239 reported incidents of ASB in 2006/07 in	2% Reduction on 06/07 figures by 09/10* (from 6239 to 6114)	CDRP activity to tackle ASB. ASB letters delivered Local policing	End April 2010	ASB Co-ordinator (police) CDRP partners	Police	A2a A2b A2c	ASB has been reduced by 2.2% during the past year. There have been some	

**COMMUNITIES THAT ARE SAFE AND FEEL SAFE HIGH LEVEL ACTION PLAN**  
**THEME CHAIR: TONY LOVE**

***PRIORITY: TO REDUCE FEAR OF CRIME***

<b>Key Deliverable (Outcomes)</b>	<b>Baseline</b>	<b>Outputs</b>	<b>How do we know we are getting there?</b>	<b>Completion Date</b>	<b>Resource</b>	<b>Lead Partner</b>	<b>LAA Link</b>	<b>Progress to Date March 2008</b>	<b>Status</b>
*(Defined via use of dedicated CDRP Analyst to highlight and prioritise those areas).	key areas	(*NB new indicator being developed in LAA refresh)	activity through PACT publicity Monthly stats for Bromsgrove District confirming levels of reported ASB by Ward		LAA funding if required			significant successes and only in three months were the ASB reports higher than in the previous year. (NB: Easter was in March this year as were the school holidays, which in effect gave us two difficult months in one year).	

**COMMUNITIES THAT ARE SAFE AND FEEL SAFE HIGH LEVEL ACTION PLAN**  
**THEME CHAIR: TONY LOVE**

***PRIORITY: TO REDUCE FEAR OF CRIME***

<b>Key Deliverable (Outcomes)</b>	<b>Baseline</b>	<b>Outputs</b>	<b>How do we know we are getting there?</b>	<b>Completion Date</b>	<b>Resource</b>	<b>Lead Partner</b>	<b>LAA Link</b>	<b>Progress to Date March 2008</b>	<b>Status</b>
Improved safety through reduced recorded crime	WMC targets to be set April 2007  No reported racial incidents to Local Authority in 2005/2006	1) % crime reduction -Reduce re offending -Increase % of arrests for domestic violence.	CDRP tasking activity POPO strategy for re-offending	End April 2008 (repeat annually)	ASB Co-ordinator (police) partners LAA funding for specific schemes If required	Police	A1a A1b	All crimes, vehicle crime and burglary dwellings are all below target. Violent crime now 21 crimes under target. A new Violent Crime Strategy was introduced on 10 <sup>th</sup> March 2008. Further strategies will be implemented for burglary dwelling and ASB/Damage from 1 <sup>st</sup> April 2008.  Domestic violence arrest rate is 88%.	

**COMMUNITIES THAT ARE SAFE AND FEEL SAFE HIGH LEVEL ACTION PLAN**  
**THEME CHAIR: TONY LOVE**

***PRIORITY: TO REDUCE FEAR OF CRIME***

<b>Key Deliverable (Outcomes)</b>	<b>Baseline</b>	<b>Outputs</b>	<b>How do we know we are getting there?</b>	<b>Completion Date</b>	<b>Resource</b>	<b>Lead Partner</b>	<b>LAA Link</b>	<b>Progress to Date March 2008</b>	<b>Status</b>
		2) 5% Increase in number of Racial incidents recorded by LA	Increased publicity/ partnership working and reporting centres	Each year to coincide with BVPI reporting	BDC	BDC	A1d	15 hate crimes reported via new system to date. Hate incidents detection rate is 70%. BHIP staffing issues addressed by multi-agency funding.	
		3) Action taken in 100% of racial incident cases recorded by the LA		April 2010				All packages actioned.	

**BETTER ENVIRONMENT HIGH LEVEL ACTION PLAN**  
**THEME CHAIR: RACHEL JONES**

***PRIORITY: To reduce greenhouse gas emissions and adapt to impacts of climate change***

<b>Key Deliverable (Outcomes)</b>	<b>Baseline</b>	<b>Outputs</b>	<b>How do we know we are getting there?</b>	<b>Completion Date</b>	<b>Resource</b>	<b>Lead Partner</b>	<b>LAA Link</b>	<b>Progress to Date March 2008</b>	<b>Status</b>
Sustainable Energy Action Plan for District	HECA baseline for 05/06 is 22.68% Baseline CO2 data needs to be established for district	Reduction in CO2 and improvement in Energy Efficiency	Action plan developed HECA Targets 2% increase year on year CO2 figures DTI will release figures annually	Action Plan Completed by September 07 2010 a 30% improvement in EE required	WEEAC & BDC	WEEAC	N/A	BDC on target to achieve 30% improvement. New NI's have been developed and will become targets under the LAA. These presently include NI 186 and NI 188. Targets will need to be negotiated by districts. DEFRA looking for a CO2 reduction of 8-13% by 2010 (2005 baseline). Initial targets for CO2 reduction are being negotiated with GOWM. We are looking at a 2% year on year reduction to	

**BETTER ENVIRONMENT HIGH LEVEL ACTION PLAN**  
**THEME CHAIR: RACHEL JONES**

**PRIORITY: To reduce greenhouse gas emissions and adapt to impacts of climate change**

Key Deliverable (Outcomes)	Baseline	Outputs	How do we know we are getting there?	Completion Date	Resource	Lead Partner	LAA Link	Progress to Date March 2008	Status
								achieve the 60% reduction by 2050. Bromsgrove District will be looking to reduce CO2 emissions by 66,000 tonnes by 2010.	
Travel Plan for BDC (council only)	2005 baseline data. 87% travel in own car. 4% car share. This baseline needs to be reviewed	Travel Plan Reviewed	Ratified by Councillors	February 2008	Initial report EST funded, HECA funded by BDC	BDC & WEEAC	B2a B2b B2c	The travel plan will not be achieved in the current financial year and it will be taken forward to the action plan 2008/09. A document on the implementation is being drafted for the BDC.	
		Reduction in private car usage	Number of staff car sharing. Increase by 10%	March 2009	BDC	BDC support from WCC	B2c	No action at this time.	

**BETTER ENVIRONMENT HIGH LEVEL ACTION PLAN**  
**THEME CHAIR: RACHEL JONES**

***PRIORITY: To reduce greenhouse gas emissions and adapt to impacts of climate change***

<b>Key Deliverable (Outcomes)</b>	<b>Baseline</b>	<b>Outputs</b>	<b>How do we know we are getting there?</b>	<b>Completion Date</b>	<b>Resource</b>	<b>Lead Partner</b>	<b>LAA Link</b>	<b>Progress to Date March 2008</b>	<b>Status</b>
Travel Plan for Bromsgrove District	Figures for district need to be established	Sign up by external organisations.	Numbers signed up to Plan. 5% annual increase	March 2008 for Travel Plan	BDC	BDC & WCC	F5 B2	This has been delayed and will form part of the action plan for 2009/10 to assist in the delivery of NI 186.	
		Reduction on private car usage	Baseline data established.	March 2008	BDC & WCC	BDC & WCC	N/A	This has been delayed and will form part of the action plan for 2009/10 to assist in the delivery of NI 186.	



**BETTER ENVIRONMENT HIGH LEVEL ACTION PLAN**  
**THEME CHAIR: RACHEL JONES**

***PRIORITY: Reduce waste, increase recycling and ensure cleaner, greener and safer public spaces***

<b>Key Deliverable (Outcomes)</b>	<b>Baseline</b>	<b>Outputs</b>	<b>How do we know we are getting there?</b>	<b>Completion Date</b>	<b>Resource</b>	<b>Lead Partner</b>	<b>LAA Link</b>	<b>Progress to Date March 2008</b>	<b>Status</b>
Increase in tonnage of waste sent by BDC for recycling and a decrease in tonnage of residual waste sent for disposal	2005/06, 17,004 tonnes sent for recycling – 22,964 tonnes sent for disposal	Increase in BV82a <sup>ii</sup> & b <sup>ii</sup>	Improvement in BV82a & b, monitored and reported monthly	Strategy runs until 2034. Figures reported annually	BDC & Waste Performance efficiency grants	BDC	B3	Total amount of residual waste sent to landfill 22,300, which is 300 tonnes less than the previous year.  Dry recycling target was exceeded at 22% (target 21.5%).	
Clean & Safe Streets	2005/06 BV199a (litter) – 26% BV199b (graffiti) – 6% BV199c (fly tipping) – 1% BV199d (fly tipping) – 4%	BV199 a,b,c & d To reduce measured levels of graffiti by 25% or more across those land use types where levels recorded in	Improved performance in BV199 which is monitored 3 times per year and reported annually	The output is a proposed target that will be agreed by all Las mid-2007	BDC	BDC	B1	BV199 (graffiti) currently at 5%.	

**BETTER ENVIRONMENT HIGH LEVEL ACTION PLAN**  
**THEME CHAIR: RACHEL JONES**

***PRIORITY: Reduce waste, increase recycling and ensure cleaner, greener and safer public spaces***

Key Deliverable (Outcomes)	Baseline	Outputs	How do we know we are getting there?	Completion Date	Resource	Lead Partner	LAA Link	Progress to Date March 2008	Status
		2005/6-baseline assessment exceeded 2%, county wide, by 1 <sup>st</sup> April 2008 and improving incrementally thereafter.							

**BETTER ENVIRONMENT HIGH LEVEL ACTION PLAN**  
**THEME CHAIR: RACHEL JONES**

***PRIORITY: Protect and improve natural environment***

Key Deliverable (Outcomes)	Baseline	Outputs	How do we know we are getting there?	Completion Date	Resource	Lead Partner	LAA Link	Progress to Date March 2008	Status
Translation of regional and county level	BAP review under way	Worcestershire BAP revised, to include	Progress on BAP revision and priority	September 2007 for BAP review	WBP Natural England	WBP	B4	BAP should be fully reviewed by May 2008. This date for	

**BETTER ENVIRONMENT HIGH LEVEL ACTION PLAN**  
**THEME CHAIR: RACHEL JONES**

***PRIORITY: Protect and improve natural environment***

<b>Key Deliverable (Outcomes)</b>	<b>Baseline</b>	<b>Outputs</b>	<b>How do we know we are getting there?</b>	<b>Completion Date</b>	<b>Resource</b>	<b>Lead Partner</b>	<b>LAA Link</b>	<b>Progress to Date March 2008</b>	<b>Status</b>
projects (including Landscapes for Living, BAP review and Habitat Inventory) into local action to protect and improve biodiversity		consideration of BDC Biodiversity Action Plan and BDC Water Vole Strategy.	setting		GOWM			completion was revised by the Biodiversity Partnership.	
		Biodiversity priorities for the county and District identified, and BDC actions being worked on.	BARS reporting on LBAP actions	Winter 2007/08 for priority setting exercise	BDC	WBP		Awaiting completion of plans from countywide group. As above re completion date.	
	Habitat Inventory for the District completed	Assessment of current state of biodiversity in the district	Progress on prioritisation of biodiversity work	Winter 07/08 for Habitat Inventory being in use	BDC	WCC		Habitat Inventory is being used by the Planning Dept.	

**BETTER ENVIRONMENT HIGH LEVEL ACTION PLAN**  
**THEME CHAIR: RACHEL JONES**

***PRIORITY: Protect and improve natural environment***

<b>Key Deliverable (Outcomes)</b>	<b>Baseline</b>	<b>Outputs</b>	<b>How do we know we are getting there?</b>	<b>Completion Date</b>	<b>Resource</b>	<b>Lead Partner</b>	<b>LAA Link</b>	<b>Progress to Date March 2008</b>	<b>Status</b>
	but not yet available for use.	completed, using HI.							
		The HI being used to aid planning decision-making.	Number of BAP quality habitats being developed without appropriate mitigation.	Winter 07/08 for Habitat Inventory being in use	BDC	WCC		Habitat Inventory is being used by the Planning Dept.	
	No Local Natures Reserves and no district specific biodiversity projects identified	LNR designation	Work being carried out towards assessing potential for LNRs and development of other projects, using BAP and HI.	End of plan period for LNR designation (March 2010)	BDC	BDC		No action at this time.	

**BROMSGROVE TOWN CENTRE REDEVELOPMENT HIGH LEVEL ACTION PLAN**  
**THEME CHAIR: PHIL STREET**

***PRIORITY: Bromsgrove Town Centre Redevelopment***

<b>Key Deliverable (Outcomes)</b>	<b>Baseline</b>	<b>Outputs</b>	<b>How do we know we are getting there?</b>	<b>Completion Date</b>	<b>Resource</b>	<b>Lead Partner</b>	<b>LAA Link</b>	<b>Progress to Date March 2008</b>	<b>Status</b>
Regeneration of town centre	No baseline	Output measures and targets to be agreed in year 2 once baseline ascertained (relating to retail, housing with affordable housing element, transportation (including railway station redevelopment),	Y1 Consultation with public and partners on preferred options.	31 <sup>st</sup> May 2008	BDC Budget £50K	BDC Head of Planning	C1	Issues and options preparatory work completed and management of consultation being planned.	
			Marketing Plan agreed	31 <sup>st</sup> May 2008	???	Marketing Manager		No action at this time.	
			Y2 Development Partners selected. Project Plan agreed.	31 <sup>st</sup> May 2009	????	????	BDC	No action at this time.	

**BROMSGROVE TOWN CENTRE REDEVELOPMENT HIGH LEVEL ACTION PLAN**  
**THEME CHAIR: PHIL STREET**

***PRIORITY: Bromsgrove Town Centre Redevelopment***

<b>Key Deliverable (Outcomes)</b>	<b>Baseline</b>	<b>Outputs</b>	<b>How do we know we are getting there?</b>	<b>Completion Date</b>	<b>Resource</b>	<b>Lead Partner</b>	<b>LAA Link</b>	<b>Progress to Date March 2008</b>	<b>Status</b>
		public realm dependent on preferred options)	Y3 Area Action Plan submitted to Planning Inspectorate as part of LDF. Land Assembly completed	30 <sup>th</sup> September 2009				No action at this time.	

**LONGBRIDGE REGENERATION HIGH LEVEL ACTION PLAN**  
**THEME CHAIR: PHIL STREET**

***PRIORITY: Longbridge Regeneration***

<b>Key Deliverable (Outcomes)</b>	<b>Baseline</b>	<b>Outputs</b>	<b>How do we know we are getting there?</b>	<b>Completion Date</b>	<b>Resource</b>	<b>Lead Partner</b>	<b>LAA Link</b>	<b>Progress to Date March 2008</b>	<b>Status</b>
Creation of employment opportunities in	Current jobs?	500 new jobs	Longbridge Area Action Plan adopted	31 <sup>st</sup> March 2008	BDC Budget £50K	BDC	C1 C2 C3	12 acres of site now occupied and speculative	

**LONGBRIDGE REGENERATION HIGH LEVEL ACTION PLAN**  
**THEME CHAIR: PHIL STREET**

***PRIORITY: Longbridge Regeneration***

<b>Key Deliverable (Outcomes)</b>	<b>Baseline</b>	<b>Outputs</b>	<b>How do we know we are getting there?</b>	<b>Completion Date</b>	<b>Resource</b>	<b>Lead Partner</b>	<b>LAA Link</b>	<b>Progress to Date March 2008</b>	<b>Status</b>
Cofton Centre			as part of LDF with employment allocation					units being built by landowner.	
Mixed Housing provision on East Works	Nil	Area Action Plan adopted with allocation of 700 new homes >35% Affordable	LDF timetable met	31 <sup>st</sup> March 2008	BDC LDF Budget £50K	BDC Birm. City Council	F1	AAP submitted to Secretary of State including proposal for 700 house plus on East Works site.	
Community Facilities on East Works	Nil	Area Action Plan adopted with allocation for Community facilities	LDF timetable met.	31 March 2008	BDC budget £50k	BDC	F2/4	Community facilities indicated in AAP.	

**HEALTH & WELL BEING HIGH LEVEL ACTION PLAN**  
**THEME CHAIR: LIZ ALTAY**

***PRIORITY: Physical Activity***

<b>Key Deliverable (Outcomes)</b>	<b>Baseline</b>	<b>Outputs</b>	<b>How do we know we are getting there?</b>	<b>Completion Date</b>	<b>Resource</b>	<b>Lead Partner</b>	<b>LAA Link</b>	<b>Progress to Date March 2008</b>	<b>Status</b>
Increase life expectancy, improve quality of life and reduce morbidity	22% of adults take exercise 3 or more times a week <i>(Baseline from 2006 "Active People" survey)</i>	1% increase in physical activity participation annually (adults)	Set up Bromsgrove Community Sports Network Map/audit all current activity (sport & physical activity opportunities)	End April 2008 (survey repeated every 3 years with smaller annual samples)	CSN Funding	PCT/BDC	D.1 b D.1 c D.1 d D.2 a F.2 c	Community Sports Network (BECAN) well established. Mapping and audit being undertaken by SPHW. Bromsgrove physical activity website, brochures and programmes to be produced from April 2008.	



**HEALTH & WELL BEING HIGH LEVEL ACTION PLAN**  
**THEME CHAIR: LIZ ALTAY**

***PRIORITY: Physical Activity***

Key Deliverable (Outcomes)	Baseline	Outputs	How do we know we are getting there?	Completion Date	Resource	Lead Partner	LAA Link	Progress to Date March 2008	Status
			Increased council leisure centre take-ups, set up GP exercise scheme referrals, roll out walking for health	April 2010				Best Foot Forward, Keep on Moving, Try New Things and Activity Referral all awaiting SE feedback following stage 2 submissions. 5 hour offer programme developed and new Joint Delivery Plans in place for April 2008 – March 2009. Angling project now re-profiled to commence May 2008. Awards evening delivered and successful.	

**HEALTH & WELL BEING HIGH LEVEL ACTION PLAN**  
**THEME CHAIR: LIZ ALTAY**

***PRIORITY: Older People***

<b>Key Deliverable (Outcomes)</b>	<b>Baseline</b>	<b>Outputs</b>	<b>How do we know we are getting there?</b>	<b>Completion Date</b>	<b>Resource</b>	<b>Lead Partner</b>	<b>LAA Link</b>	<b>Progress to Date March 2008</b>	<b>Status</b>
Increase life expectancy and improve quality of life	No ageing well scheme in Bromsgrove	15 Senior Health Mentors in place by 2009 offering at least 8 different activities	5 Senior Health Mentors trained by April 2008	End April 2009	No funding allocated at present	PCT/BARN	D.2 a D.2 b D.3 a D.3 b D.3.c D. 5 d F.2 c F.2 d	Deferred until objective/clarification obtained from Older People's Theme Group.	

**HEALTH & WELL BEING HIGH LEVEL ACTION PLAN**  
**THEME CHAIR: LIZ ALTAY**

***PRIORITY: Smoking: Increase numbers successfully quitting at 4 weeks***

<b>Key Deliverable (Outcomes)</b>	<b>Baseline</b>	<b>Outputs</b>	<b>How do we know we are getting there?</b>	<b>Completion Date</b>	<b>Resource</b>	<b>Lead Partner</b>	<b>LAA Link</b>	<b>Progress to Date March 2008</b>	<b>Status</b>
Increase life expectancy and reduce morbidity	24% of population smoke (national figures)	Reduce adult smoking rates by 3% by 2010	Support local businesses with smoking ban in workplace (1July)	End April 2010	BDC rec'd funding for Health & Safety Officer	BDC	D.1 a D.2 a D.2 c D.5 c	BDC continuing to support local businesses re smoking ban and revised lower age limit for tobacco sales. Project group launching Heart Smart Award via Charford Children's Centre on 4 <sup>th</sup> July 2008. Continuing to promote Heart Smart Awards for the workplace.	

**HEALTH & WELL BEING HIGH LEVEL ACTION PLAN**  
**THEME CHAIR: LIZ ALTAY**

***PRIORITY: Smoking: Increase numbers successfully quitting at 4 weeks***

<b>Key Deliverable (Outcomes)</b>	<b>Baseline</b>	<b>Outputs</b>	<b>How do we know we are getting there?</b>	<b>Completion Date</b>	<b>Resource</b>	<b>Lead Partner</b>	<b>LAA Link</b>	<b>Progress to Date March 2008</b>	<b>Status</b>
	???? x no. successfully quitting at 4 weeks (2006/07 figures)	x no. successfully quitting at 4 weeks by 5% annually	Publicise benefits of quitting, with follow up and support. All LSP partners to support ban on premises (with support)	End April 2010		PCT	D.1 a D.2 a D.2 c D.5 c	Targeting BDC, POWCH and NEW College. 12/3/08: No Smoking Day – NEW College Fun Run at Abbey Stardium and One Year On event scheduled to take place in autumn, targeting local businesses.	

**HEALTH & WELL BEING HIGH LEVEL ACTION PLAN**  
**THEME CHAIR: LIZ ALTAY**

***PRIORITY: Smoking: Increase numbers successfully quitting at 4 weeks***

<b>Key Deliverable (Outcomes)</b>	<b>Baseline</b>	<b>Outputs</b>	<b>How do we know we are getting there?</b>	<b>Completion Date</b>	<b>Resource</b>	<b>Lead Partner</b>	<b>LAA Link</b>	<b>Progress to Date March 2008</b>	<b>Status</b>
			Brief Intervention training for LSP partners for contacts with clients/patients/customers	End April 2010		PCT	D.1 a D.2 a D.2 c D.5 c	Targeting BDC, Princess of Wales Community Hospital and NEW College. Mapping available 'trained' staff and establishing network for sharing information and best practice.	

**HEALTH & WELL BEING HIGH LEVEL ACTION PLAN**  
**THEME CHAIR: LIZ ALTAY**

***PRIORITY: Smoking: Increase numbers successfully quitting at 4 weeks***

<b>Key Deliverable (Outcomes)</b>	<b>Baseline</b>	<b>Outputs</b>	<b>How do we know we are getting there?</b>	<b>Completion Date</b>	<b>Resource</b>	<b>Lead Partner</b>	<b>LAA Link</b>	<b>Progress to Date March 2008</b>	<b>Status</b>
	???of population who smoke in disadvantaged areas (2006 figures)	Reduce the inequality in smoking rates in disadvantaged areas by 10% by 2010	Determine smoking rates by deprivation quintile and target specific areas	End April 2010		PCT	D.1 a D.2 a D.2 c D.5 c	Local smoking data and synthetic estimates have been mapped. Charford & Sidemoor identified as hotspots and currently have no accessible quit clinic. Action plan to be developed.	

**HEALTH & WELL BEING HIGH LEVEL ACTION PLAN**  
**THEME GROUP CHAIR: LIZ ALTAY**

**PRIORITY: Mental Health**

<b>Key Deliverable (Outcomes)</b>	<b>Baseline</b>	<b>Outputs</b>	<b>How do we know we are getting there?</b>	<b>Completion Date</b>	<b>Resource</b>	<b>Lead Partner</b>	<b>LAA Link</b>	<b>Progress to Date March 2008</b>	<b>Status</b>
Establishing local NHS and Local Government as exemplars in employment practice	NIL	Revised employment practice promoting positive mental health at work	Review of current practice against evidence based positive mental health policies	Oct 2009	All partners	PCT	D6	New priority identified via Sustainable Community Strategy. To commence in year 2.	
Improved Life choices for People with Mental Health Problems	NIL	The percentage of people with a recorded enhanced Care Programme Approach (CPA) who have annual physical health assessment and healthy lifestyle	Development of annual checks	Oct 2009	Mental Health Trust/ PCT	Mental Health Trust	D6 D1	New priority identified via Sustainable Community Strategy. To commence in year 2.	

**HEALTH & WELL BEING HIGH LEVEL ACTION PLAN**  
**THEME GROUP CHAIR: LIZ ALTAY**

**PRIORITY: Mental Health**

<b>Key Deliverable (Outcomes)</b>	<b>Baseline</b>	<b>Outputs</b>	<b>How do we know we are getting there?</b>	<b>Completion Date</b>	<b>Resource</b>	<b>Lead Partner</b>	<b>LAA Link</b>	<b>Progress to Date March 2008</b>	<b>Status</b>
		interventions							

**CHILDREN & YOUNG PEOPLE HIGH LEVEL ACTION PLAN**  
**THEME CHAIR: ELAINE MORTIMORE**

***PRIORITY: Children Enjoying and Achieving***

<b>Key Deliverable (Outcomes)</b>	<b>Baseline</b>	<b>Outputs</b>	<b>How do we know we are getting there?</b>	<b>Completion Date</b>	<b>Resource</b>	<b>Lead Partner</b>	<b>LAA Link</b>	<b>Progress to Date March 2008</b>	<b>Status</b>
To develop inclusive communities by increasing the lowest level of attainment	Achievement levels for Bromsgrove below average schools Key Stage 2 & 4.	Achieve LAA targets for Primary School Key Stage 2 & Secondary Schools Key Stage 4 for schools in Bromsgrove	Monitor quarterly performance figures	March 2008	Adopt & support Worcestershire Management Board action plan for CYP	WCC	E2	No further action as discussed at December 2007 LSP Board meeting. (Discussed in 6.5 of progress update of Community Improvement Plan).	



**CHILDREN & YOUNG PEOPLE HIGH LEVEL ACTION PLAN**  
**THEME CHAIR: ELAINE MORTIMORE**

***PRIORITY: Children Enjoying and Achieving***

<b>Key Deliverable (Outcomes)</b>	<b>Baseline</b>	<b>Outputs</b>	<b>How do we know we are getting there?</b>	<b>Completion Date</b>	<b>Resource</b>	<b>Lead Partner</b>	<b>LAA Link</b>	<b>Progress to Date March 2008</b>	<b>Status</b>
	Percentage of students obtaining 5 or more GCSE grades A-C including English & mathematics for the Charford Ward	Improve 2005/6 performance levels by x%	Monitor quarterly performance figures	March 2010	Adopt & support Worcestershire Management Board action plan for CYP	WCC	E2	No further action as discussed at December 2007 LSP Board meeting. (Discussed in 6.5 of progress update of Community Improvement Plan).	
	2006/07 performance data for South Bromsgrove Secondary School on the numbers of half days absence	Improve the performance of South Bromsgrove Secondary School by a reduction of X in the numbers of half days absence.	Monitor quarterly performance figures	March 2010	Adopt & support Worcestershire Management Board action plan for CYP	WCC	E4a E4b	No further action as discussed at December 2007 LSP Board meeting. (Discussed in 6.5 of progress update of Community Improvement Plan).	

**CHILDREN & YOUNG PEOPLE HIGH LEVEL ACTION PLAN**  
**THEME CHAIR: ELAINE MORTIMORE**

***PRIORITY: Children contributing and being included***

<b>Key Deliverable (Outcomes)</b>	<b>Baseline</b>	<b>Outputs</b>	<b>How do we know we are getting there?</b>	<b>Completion Date</b>	<b>Resource</b>	<b>Lead Partner</b>	<b>LAA Link</b>	<b>Progress to Date March 2008</b>	<b>Status</b>
To improve access to and take up of integrated local preventative services	x percent of 5 – 16 year old children in Bromsgrove primary, middle and secondary schools participate in a minimum of 2 hours per week of high quality PE and school sports over the course of year	Increase by 3% the percentage who participate in a minimum of 2 hours per week of high quality PE and school sports over the course of year	Monitor quarterly performance figures; partners help to arrange relevant activity for children	March 2009	LDP funding All partners	WCC/PCT	E5	Target for 2007 was 75%; actual achieved was 78%. Aim for 2008 = 85%; already achieved 82%.	
To enrich the experiences and development of children & young people in Bromsgrove through activity	Baseline to be determined for number of children aged between 8 and 16	Output measures and targets to be agreed in year 2 once baseline ascertained	Carry out survey of children	Survey by April 2008	BDC/WCC	BDC	E5	No further action as discussed at December 2007 LSP Board meeting. (Discussed in 6.5 of progress	

**CHILDREN & YOUNG PEOPLE HIGH LEVEL ACTION PLAN**  
**THEME CHAIR: ELAINE MORTIMORE**

***PRIORITY: Children contributing and being included***

<b>Key Deliverable (Outcomes)</b>	<b>Baseline</b>	<b>Outputs</b>	<b>How do we know we are getting there?</b>	<b>Completion Date</b>	<b>Resource</b>	<b>Lead Partner</b>	<b>LAA Link</b>	<b>Progress to Date March 2008</b>	<b>Status</b>
& positive contribution	volunteering to work with older people							update of Community Improvement Plan).	

**CHILDREN & YOUNG PEOPLE HIGH LEVEL ACTION PLAN**  
**THEME GROUP CHAIR: ELAINE MORTIMORE**

**PRIORITY: Tackling childhood obesity**

<b>Key Deliverable (Outcomes)</b>	<b>Baseline</b>	<b>Outputs</b>	<b>How do we know we are getting there?</b>	<b>Completion Date</b>	<b>Resource</b>	<b>Lead Partner</b>	<b>LAA Link</b>	<b>Progress to Date March 2008</b>	<b>Status</b>
To increase life expectancy and reduce morbidity of children and young people by halting the year on year rise in childhood obesity	15.05% obese in Year 6 (age 10 & 11) 14.45% overweight in Year 6  (academic year 05/06)	15.95% obese by 08/09  14.75% overweight by 08/09	Development and promotion of national child measuring programme in all Bromsgrove schools in Reception and Year 6	Oct 07 (annually thereafter)	PCT/BDC	PCT	E7	Some of the MEND training now complete. Delivery will commence in September 2008 due to poor recruitment. Promotion and recruitment strategy will be undertaken June – September.	
			Development of childhood obesity action plan	April 08	PCT/BDC/Schools	PCT	E7	Draft Obesity Strategy circulated and stakeholder event held.	

**CHILDREN & YOUNG PEOPLE HIGH LEVEL ACTION PLAN  
THEME GROUP CHAIR: ELAINE MORTIMORE**

<b>PRIORITY: Tackling childhood obesity</b>									
<b>Key Deliverable (Outcomes)</b>	<b>Baseline</b>	<b>Outputs</b>	<b>How do we know we are getting there?</b>	<b>Completion Date</b>	<b>Resource</b>	<b>Lead Partner</b>	<b>LAA Link</b>	<b>Progress to Date March 2008</b>	<b>Status</b>
			Implementation of MEND programme in Bromsgrove	Jan 08	PCT/BDC/North Worcs Schools Sports partnership	PCT	E7	Planning completed and information provided to schools.	
To increase life expectancy and reduce morbidity of children and young people by increasing levels of physical activity	80% is the percentage of 5-16 year olds in Bromsgrove schools participating in a minimum of 2 hours per week of high quality PE and school sports over the course of a school year	88% by 07/08	Implementation of PESSCL strategy in Bromsgrove schools	Oct 07	CSP/WCC/BDC/PCT	WCC	E7	Measurement sessions ongoing.	
			Increasing access to opportunities for physical activity outside of school	Apr 08	BDC/CSP/PCT	BDC	E7	Currently at 82% (July 2007) from 70% baseline (October 2006).	

**OLDER PEOPLE HIGH LEVEL ACTION PLAN**  
**THEME CHAIR: ANN SOWTON**

***PRIORITY: Create an Older Peoples' Theme Group***

<b>Key Deliverable (Outcomes)</b>	<b>Baseline</b>	<b>Outputs</b>	<b>How do we know we are getting there?</b>	<b>Completion Date</b>	<b>Resource</b>	<b>Lead Partner</b>	<b>LAA Link</b>	<b>Progress to Date March 2008</b>	<b>Status</b>
Operate an effective Older People's Theme Group	No baseline information available	Hold bi-monthly theme group meetings	Agencies release staff to attend follow up non-attendees	End April 2008	Limited funding. Partner organisations' in kind contribution	BARN		Achieved.	
	Establish baseline for involvement in theme group	Identify other agencies to be involved	Outputs identified are delivered	April 2008	?	?		Baseline established. Need to continue developing links with other agencies not currently engaged.	
		Cross reference activity with other LSP theme groups	Activity cross-referenced	April 2010	?	?		Links to other theme groups and possible cross-working opportunities identified and signposted to relevant theme group.	

**OLDER PEOPLE HIGH LEVEL ACTION PLAN**  
**THEME CHAIR: ANN SOWTON**

***PRIORITY: Older People and access to services***

<b>Key Deliverable (Outcomes)</b>	<b>Baseline</b>	<b>Outputs</b>	<b>How do we know we are getting there?</b>	<b>Completion Date</b>	<b>Resource</b>	<b>Lead Partner</b>	<b>LAA Link</b>	<b>Progress to Date March 2008</b>	<b>Status</b>
Older people access services more easily	Map outreach services provided by all agencies	Identify baseline of existing services and identify gaps in services	Undertake survey by September 2008 to assess possible expansion	End April 2010	Will any funding be earmarked for specific schemes?	WCC	F5a	Started mapping with Older People's Theme Group members. Need to identify resources to undertake survey in September 2008.	

**OLDER PEOPLE HIGH LEVEL ACTION PLAN**  
**THEME CHAIR: ANN SOWTON**

***PRIORITY: Older People and access to services***

<b>Key Deliverable (Outcomes)</b>	<b>Baseline</b>	<b>Outputs</b>	<b>How do we know we are getting there?</b>	<b>Completion Date</b>	<b>Resource</b>	<b>Lead Partner</b>	<b>LAA Link</b>	<b>Progress to Date March 2008</b>	<b>Status</b>
	x% of older people satisfied that their enquiries were dealt with at first point of contact by Worcester hub at the Dolphin Centre (figure to be set in 2008 Customer Panel survey)	x% more older people satisfied that their enquiries were dealt with at first point of contact by Worcester hub at the Dolphin Centre	More publicity for hub and survey of older people to assess how access can be made easier	End April 2010		WCC/BDC	D3a F6a	Looking to link to the Compact Theme Group and the use of Hub facilities to circulate information via newsletters, posters and electronic notice boards.	



**OLDER PEOPLE HIGH LEVEL ACTION PLAN**  
**THEME CHAIR: ANN SOWTON**

***PRIORITY: Older People and Communication***

<b>Key Deliverable (Outcomes)</b>	<b>Baseline</b>	<b>Outputs</b>	<b>How do we know we are getting there?</b>	<b>Completion Date</b>	<b>Resource</b>	<b>Lead Partner</b>	<b>LAA Link</b>	<b>Progress to Date March 2008</b>	<b>Status</b>
Older people have a greater voice	4 older people involved in older persons' forum as April 2007	A minimum of 60 people over 55 engaged in an Older Persons' theme group between 2007 and 2010	In the next year, at least 10 older people are recruited, meet, devise terms of reference and set objectives for the Older Persons' theme group	April 2010	Partners' in kind contributions	BARN	D.3 a D.3 b D.3 c F.3 a	200 plus attended the March AGM, mainly to talk about car parking charges. From this, 5 new members have been identified.	
		A minimum of 6 group meetings per year	Attendance at Age Concern fair, publicity and involvement of U3A	April 2010	Partners' in kind contributions	BARN	D.3 a D.3 b D.3 c F.3 a	On target.	

**HOUSING HIGH LEVEL ACTION PLAN**  
**THEME CHAIR: MIKE BROWN**

***PRIORITY: Responding to Housing Market***

<b>Key Deliverable (Outcomes)</b>	<b>Baseline</b>	<b>Outputs</b>	<b>How do we know we are getting there?</b>	<b>Completion Date</b>	<b>Resource</b>	<b>Lead Partner</b>	<b>LAA Link</b>	<b>Progress to Date March 2008</b>	<b>Status</b>
Comprehensive understanding of the Housing Market and Housing demand/supply within Bromsgrove	Fordham Housing Needs Survey 2004	Complete Housing Demand Study for Bromsgrove District and produce new Housing Strategy	Project Plan Agreed and Funding in place	April 2007	BDC Budgets RSLs operating in Bromsgrove District Budgets Approx £50K	BDC Strategic Housing Manager supported by RSLs	F1	This project has been brought forward due to difficulties with low property numbers in Regional Spatial Strategy. Housing demand information seen as critical to ongoing case for increased allocation.	
			Study Completed	June 2008			F1	Partner funding in place. BDC funding agreed in principle.	

**HOUSING HIGH LEVEL ACTION PLAN**  
**THEME CHAIR: MIKE BROWN**

***PRIORITY: Complementary Housing & Planning Policy***

<b>Key Deliverable (Outcomes)</b>	<b>Baseline</b>	<b>Outputs</b>	<b>How do we know we are getting there?</b>	<b>Completion Date</b>	<b>Resource</b>	<b>Lead Partner</b>	<b>LAA Link</b>	<b>Progress to Date March 2008</b>	<b>Status</b>
Review of Planning Policy to support housing demand	Current Planning and Housing Strategies	Local Planning Policy fully complements and supports BDC priority for affordable Housing	Priority and Project Plan agreed by Council	October 2008	BDC employees and Councillors	BDC Head of Planning	F1	No action at this time; however, this work is directly linked to the outcome of the demand stuffy and the challenge to the Regional Spatial Strategy numbers for Bromsgrove.	

**HOUSING HIGH LEVEL ACTION PLAN**  
**THEME CHAIR: MIKE BROWN**

***PRIORITY: Complementary Housing & Planning Policy***

<b>Key Deliverable (Outcomes)</b>	<b>Baseline</b>	<b>Outputs</b>	<b>How do we know we are getting there?</b>	<b>Completion Date</b>	<b>Resource</b>	<b>Lead Partner</b>	<b>LAA Link</b>	<b>Progress to Date March 2008</b>	<b>Status</b>
			Affordable Housing and Managing Housing SPDs adopted and supported by Core Strategy				F1	No action at this time; however, this work is directly linked to the outcome of the demand stuffy and the challenge to the Regional Spatial Strategy numbers for Bromsgrove.	

**HOUSING HIGH LEVEL ACTION PLAN**  
**THEME CHAIR: MIKE BROWN**

***PRIORITY: Housing Migration – South Market Housing Area***

<b>Key Deliverable (Outcomes)</b>	<b>Baseline</b>	<b>Outputs</b>	<b>How do we know we are getting there?</b>	<b>Completion Date</b>	<b>Resource</b>	<b>Lead Partner</b>	<b>LAA Link</b>	<b>Progress to Date March 2008</b>	<b>Status</b>
Review of the work of the SHMA in respect of migration	SHMA Housing Market Survey (in progress)	Impact of migration included within Housing Demand Study	See Housing Demand Study	September 2008	SHMA/ BDC	BDC Housing Strategy Manager	F1	It is intended that this project will be brought forward to July 2008 to coincide with the outcome of the Housing Demand Study.	

**HOUSING HIGH LEVEL ACTION PLAN**  
**THEME CHAIR: MIKE BROWN**

***PRIORITY: Affordable Housing***

<b>Key Deliverable (Outcomes)</b>	<b>Baseline</b>	<b>Outputs</b>	<b>How do we know we are getting there?</b>	<b>Completion Date</b>	<b>Resource</b>	<b>Lead Partner</b>	<b>LAA Link</b>	<b>Progress to Date March 2008</b>	<b>Status</b>
Delivery of Affordable Housing in Bromsgrove and Rural Areas	Tenure % of affordable housing BDC 11% is compared with average for the West Midlands and England and Wales of 21%, showing a minimum shortfall of 10%.  (NHF Source)	240 units built (Outcome measure will be reviewed against results of Housing Demand Survey and targets set in LAA)	Support applications for affordable housing 80 units per year. (Target to be reviewed against results of Housing Demand Survey)	31 <sup>st</sup> March 2010	BDC Planning Team Partner DSL's/ Social Housing Grant	BDC Strategic Housing Manager	F1	Ongoing. Year one completion on target with indications for remaining period strong.	

**HOUSING HIGH LEVEL ACTION PLAN**  
**THEME CHAIR: MIKE BROWN**

***PRIORITY: Affordable Housing***

<b>Key Deliverable (Outcomes)</b>	<b>Baseline</b>	<b>Outputs</b>	<b>How do we know we are getting there?</b>	<b>Completion Date</b>	<b>Resource</b>	<b>Lead Partner</b>	<b>LAA Link</b>	<b>Progress to Date March 2008</b>	<b>Status</b>
New Affordable housing in Bromsgrove Town Centre	Number of current units?	Outcome measure to be reviewed as Town Centre Area Action Plan is developed	Y1 Support allocations for affordable housing in Town Centre Area Action	31 <sup>st</sup> March 2008	£50K BDC budget	LSP BDC Planning Team Town Centre Theme Group	F1	Bromsgrove Housing Market survey will assist in the planning process.	
			Y2 Units per year as set out in Area Action Plan	31 <sup>st</sup> March 2009				No action at this time.	
			Y3 Units per year as set out in Area Action Plan	31 <sup>st</sup> March 2010				No action at this time.	

**HOUSING HIGH LEVEL ACTION PLAN**  
**THEME CHAIR: MIKE BROWN**

***PRIORITY: Affordable Housing***

<b>Key Deliverable (Outcomes)</b>	<b>Baseline</b>	<b>Outputs</b>	<b>How do we know we are getting there?</b>	<b>Completion Date</b>	<b>Resource</b>	<b>Lead Partner</b>	<b>LAA Link</b>	<b>Progress to Date March 2008</b>	<b>Status</b>
Affordable Housing on Longbridge Site (East Works)	No units	700 houses >35% affordable housing	Area Action Plan adopted Including allocations for affordable housing and part of final design outputs for site	31 <sup>st</sup> March 2008	BDC Planning Team (£50k) LSP Housing Theme Group Planning Grant/Social Housing Grants	BDC Corporate Services Director	F1	Negotiation in progress. Area Action Plan submitted to Secretary of State 28 <sup>th</sup> March 2008.	
			130 units per year????	31 <sup>st</sup> March 2010	????			No action at this time.	



**COMPACT HIGH LEVEL ACTION PLAN**  
**THEME CHAIR: PHIL STREET**

***PRIORITY: Joint Training & Development Opportunities***

<b>Key Deliverable (Outcomes)</b>	<b>Baseline</b>	<b>Outputs</b>	<b>How do we know we are getting there?</b>	<b>Completion Date</b>	<b>Resource</b>	<b>Lead Partner</b>	<b>LAA Link</b>	<b>Progress to Date March 2008</b>	<b>Status</b>
Comprehensive understanding of statutory and VCS sectors in context of training and emerging needs	Establish a baseline for involvement with training and development opportunities	Yr 1: Organise facilitated event	Develop ways to share skills between sectors	31 <sup>st</sup> March 2008	BDC/LSP/ Partners' time	Compact Steering Group		Facilitated event postponed and new event planned for September 2008	
		Y2: 10 people engaged in process		31 <sup>st</sup> March 2009				No action at this time	
		Y3: 20 people engaged in process		31 <sup>st</sup> March 2010				No action at this time	

**COMPACT HIGH LEVEL ACTION PLAN**  
**THEME CHAIR: PHIL STREET**

***PRIORITY: Volunteering***

<b>Key Deliverable (Outcomes)</b>	<b>Baseline</b>	<b>Outputs</b>	<b>How do we know we are getting there?</b>	<b>Completion Date</b>	<b>Resource</b>	<b>Lead Partner</b>	<b>LAA Link</b>	<b>Progress to Date March 2008</b>	<b>Status</b>
To encourage and promote volunteering	Data collected on current levels of volunteering in district	Consider Worcestershire Volunteering Strategy & Volunteering Code of Practice (for Worcs. Compact)	Strategy & Code of Practice adopted	March 2008	Compact Steering Group and LSP Board	LSP via BDC	N/A	Code of Practice considered and adopted	
		Increase volunteering in district by 2% over 3 years	Numbers of volunteers increased	31 <sup>st</sup> March 2010	Compact Steering Group and LSP Board	LSP via BDC	N/A	No action at this time	

**COMPACT HIGH LEVEL ACTION PLAN**  
**THEME CHAIR: PHIL STREET**

***PRIORITY: Help, Advice and Signposting***

<b>Key Deliverable (Outcomes)</b>	<b>Baseline</b>	<b>Outputs</b>	<b>How do we know we are getting there?</b>	<b>Completion Date</b>	<b>Resource</b>	<b>Lead Partner</b>	<b>LAA Link</b>	<b>Progress to Date March 2008</b>	<b>Status</b>
To ensure and support the provision of help, advice and signposting to further statutory and voluntary sector co-operation	Collection of data on VCS service requests	Hub has database of voluntary & community sector organisations	Template available for voluntary & community sector organisations to complete with their service details	March 2008	BDC/BARN	BDC/BARN	N/A	VCS organisations have prepared information for LCD display screens in CSC and approval for VCS notices on BDC notice boards across the district.	

**TRANSPORT HIGH LEVEL ACTION PLAN**  
**THEME CHAIR: HUGH BENNETT**

***PRIORITY: Bromsgrove Train Station***

<b>Key Deliverable (Outcomes)</b>	<b>Baseline</b>	<b>Outputs</b>	<b>How do we know we are getting there?</b>	<b>Completion Date</b>	<b>Resource</b>	<b>Lead Partner</b>	<b>LAA</b>	<b>Progress to Date March 2008</b>	<b>Status</b>
Train Station	Bromsgrove Train Station Opened*	Improved train service connections  Increased footfall	Planning application submitted by March 2008	Develop timeline for Theme Group.	June 2009	BDC £25,000 WCC £100,000	F5  <b>Link</b>	Funding still being put together. Should be agreed by June 2008 with submission of the planning application in July.	

\* with platform of suitable length for large cross county trains to stop and appropriate travel plan to link station to town centre and other parts of District. The station will need to be future proofed in terms of car parking spaces and electrification.

**TRANSPORT HIGH LEVEL ACTION PLAN**  
**THEME CHAIR: HUGH BENNETT**

**PRIORITY: Community Transport**

<b>Key Deliverable (Outcomes)</b>	<b>Baseline</b>	<b>Outputs</b>	<b>How do we know we are getting there?</b>	<b>Completion Date</b>	<b>Resource</b>	<b>Lead Partner</b>	<b>LAA Link</b>	<b>Progress to Date March 2008</b>	<b>Status</b>
Community Transport	Introduce Dial A Ride Scheme	Satisfaction rates.  Usage numbers.	Develop detailed bid by September 2008	Identify best practice and lessons learnt	April 2009	<b>To be determined through 2009/2010 budget.</b>	F5	PID agreed with CMT. Detailed research now to be undertaken.	

**TRANSPORT HIGH LEVEL ACTION PLAN**  
**THEME CHAIR: HUGH BENNETT**

**PRIORITY: Integrated Passenger Transport Strategy**

<b>Key Deliverable (Outcomes)</b>	<b>Baseline</b>	<b>Outputs</b>	<b>How do we know we are getting there?</b>	<b>Completion Date</b>	<b>Resource</b>	<b>Lead Partner</b>	<b>LAA Link</b>	<b>Progress to Date March 2008</b>	<b>Status</b>
Integrated Transport Strategy	Improved provision and routes	DDA compliant buses.  Improved routes	Detailed review of District's requirements undertaken in 2008	Final Integrated Transport Strategy	December 2008	County Council.	F5	Responses submitted. County Council should start area review later in the year.	

**COMMUNICATIONS HIGH LEVEL ACTION PLAN**  
**THEME CHAIR: HUGH BENNETT**

**PRIORITY: Effective Communication**

<b>Key Deliverable (Outcomes)</b>	<b>Baseline</b>	<b>Outputs</b>	<b>How do we know we are getting there?</b>	<b>Completion Date</b>	<b>Resource</b>	<b>Lead Partner</b>	<b>LAA Link</b>	<b>Progress to Date March 2008</b>	<b>Status</b>
Raise the profile and positive image of the area (Grumpy County Campaign)	General public satisfaction with area x % (BVPI survey 2006/07)	Improve public satisfaction with area by 1%, year on year	Carry out surveys with customer panels once a year	April 2009	BDC £20,000 (NB: budget for 2008/09 will not be approved until Feb 2008)	BDC	F3 F6	Glad or Grumpy complete and Quality of Life Survey to be reported to June meeting.	
	Improved perception of Quality of Life	To be established once Quality of Life survey carried out	Introduce a yearly Quality of Life survey to ascertain benchmark information in relation to key QoL indicators	Baseline established by April 2008	As above	BDC	F3 F6	See above.	
Develop and implement a framework for effective communication and consultation	x% of those surveyed feel that they can influence decisions in the area	Increase those who feel that they can influence decisions by x%	Pilot 2 area committees per annum and PACTS with 2 meetings per	31 <sup>st</sup> March 2009 (6 in total over 3 years)	BDC budget £4,000 per area committee (subject to	BDC	F3 F6	Review completed. Way forward (and additional funding) reported to Cabinet. Way	

**COMMUNICATIONS HIGH LEVEL ACTION PLAN**  
**THEME CHAIR: HUGH BENNETT**

**PRIORITY: Effective Communication**

Key Deliverable (Outcomes)	Baseline	Outputs	How do we know we are getting there?	Completion Date	Resource	Lead Partner	LAA Link	Progress to Date March 2008	Status
NB: There are communication strategies for other HLAP's e.g. Fear of Crime which will be included in individual plans.	(BVPI survey 2006/07)		year		review 2008/09 budget cycle)			forward agreed.	
	None	Public awareness of role of LSP	Survey to ascertain how many people are aware of the work of the LSP	Survey to be completed by April 2008	As part of annual QoL survey (see previous)	BDC	N/A	Action suspended. LSP brand not pursued.	
Community Strategy that reflects local need	x no. of responses to Community Strategy 2003 - 2013	Increase number of responses to consultation by 5%	Increased publicity for community strategy, use of existing and new forums to gather views	September 2007 Board	BDC	BDC	N/A	Completed.	

**COMMUNICATIONS HIGH LEVEL ACTION PLAN**  
**THEME CHAIR: HUGH BENNETT**

**PRIORITY: Effective Communication**

Key Deliverable (Outcomes)	Baseline	Outputs	How do we know we are getting there?	Completion Date	Resource	Lead Partner	LAA Link	Progress to Date March 2008	Status
			(eg PACTS, customer panels, older persons' forum etc)						